



# What you can do about child abuse





*Prevention is the best hope for reducing child abuse and neglect and improving the lives of children and families. Strengthening families and preventing child abuse requires a shared commitment of individuals and organizations in every community.*

This document can be provided upon request in an alternate format for individuals with disabilities or in a language other than English for people with limited English skills. To request this publication in another format or language, contact the Publications and Design Section at 503-378-3486, 711 for TTY, or email [dhs-oha.publicationrequest@state.or.us](mailto:dhs-oha.publicationrequest@state.or.us).



# What you can do about child abuse

Oregon Department of Human Services



*All citizens have a responsibility to prevent child abuse and protect children. An individual can help children in a variety of ways, from simply being a friend to protecting them from abuse.*

# Table of contents

|   |           |
|---|-----------|
| <b>Introduction.....</b>  | <b>1</b>  |
| Why do I need this information?.....  | 1         |
| What is the most important thing to remember? .....   | 2         |
| <b>Making a report .....</b>  | <b>3</b>  |
| What is reporting?.....   | 3         |
| Who are mandatory reporters?.....   | 3         |
| When does confidentiality override the need to report?.....   | 5         |
| How do I make a report?.....  | 5         |
| What information should I have?.....  | 6         |
| What information can I get from DHS after I make a report? .....  | 6         |
| What kinds of abuse am I likely to see?.....  | 7         |
| If I see a suspicious mark on a child, should I investigate it? .....   | 7         |
| Do I have to prove abuse occurred?.....   | 7         |
| What if I'm not sure it's abuse?.....   | 8         |
| If I have a feeling that a child is being abused, but there<br>are no marks on him and he hasn't said anything to me,<br>should I report my suspicion?..... | 8         |
| What should I say to a child who tells me she is being abused?....  | 8         |
| How will a child react after a report is made? .....  | 9         |
| <b>Importance of reporting abuse.....</b>   | <b>10</b> |
| What if I don't report?.....  | 10        |
| After I report, will my name be made public?.....   | 10        |
| Can I be sued by the parent for making a report?.....   | 10        |
| What if the abuse happened a long time ago?.....  | 10        |
| Should I make a report to my supervisor? .....  | 11        |
| How many cases of abuse are reported?.....  | 11        |
| How important is my report?.....  | 11        |

|   |           |
|---|-----------|
| Who decides what child abuse is?.....   | 11        |
| Isn't it better to let families work out their own problems? .....                                | 12        |
| Can other people report abuse? .....  | 12        |
| <b>Stresses of reporting abuse .....</b>  | <b>13</b> |
| Why don't people report suspected abuse? .....  | 13        |
| Is reporting abuse stressful for the reporter? .....  | 14        |
| How can I help myself during this time? .....   | 14        |
| <b>The CPS Process .....</b>  | <b>16</b> |
| What is child protective services? .....  | 16        |
| What happens after I make a report?.....  | 16        |
| What is screening? .....  | 17        |
| What is an assessment? .....  | 17        |
| How is a decision made about the child's safety? .....  | 18        |
| What is a case plan? .....  | 18        |
| When is a child protective services case closed? .....  | 19        |
| Does DHS do a face-to-face interview with every child who<br>is the subject of a report? .....    | 19        |
| May I be a part of the assessment interview with the child? .....                                 | 19        |
| If a child is being abused, will you remove him from his home? .                                  | 19        |
| Does DHS offer parents any alternatives to<br>removing their children? .....                      | 20        |
| When can DHS decide to remove a child? .....  | 20        |
| If a child is taken into protective custody from school,<br>who notifies the parents? .....       | 20        |
| After a child is removed, who reviews the decision?.....  | 21        |
| Who else reviews DHS actions?.....  | 21        |
| Does DHS prosecute abusive parents?.....  | 21        |
| Who is allowed access to the case file? .....   | 21        |
| Cultural sensitivity — does DHS take cultural child rearing<br>practices into consideration?..... | 22        |
| What kind of training do caseworkers get?.....  | 23        |

|  |           |
|--|-----------|
| What are multidisciplinary teams (MDTs)? .....               | 23        |
| <b>Frequency of child abuse.....</b>                         | <b>26</b> |
| How common is child abuse? .....                             | 26        |
| What about deaths from abuse?.....                           | 26        |
| <b>Physical abuse .....</b>                                  | <b>27</b> |
| What is physical abuse? .....                                | 27        |
| What about bruises? .....                                    | 27        |
| What about head and facial injuries? .....                   | 27        |
| What about broken bones and injured joints?.....             | 28        |
| What about poisoning? .....                                  | 28        |
| What about burns and scalds?.....                            | 29        |
| What about internal injuries?.....                           | 29        |
| What is Intentional Traumatic Brain Injury? .....            | 30        |
| Is spanking child abuse? .....                               | 30        |
| <b>Sexual abuse and sexual exploitation.....</b>             | <b>31</b> |
| What is child sexual abuse? .....                            | 31        |
| What is fondling? .....                                      | 31        |
| What is sexual contact? .....                                | 31        |
| What is sexual harassment? .....                             | 31        |
| What are exposure and voyeurism? .....                       | 31        |
| Why do children keep quiet about being sexually abused?..... | 31        |
| How often do children lie about being abused? .....          | 32        |
| What is sexual abuse of teens? .....                         | 32        |
| What is sexual exploitation?.....                            | 33        |
| <b>Neglect.....</b>  | <b>34</b> |
| What is neglect?.....  | 34        |
| What are the standards for supervision and protection?.....  | 34        |
| What are the standards for child care?.....                  | 35        |

|   |           |
|---|-----------|
| What are the standards for food and clothing? .....                             | 35        |
| What are the standards for shelter? .....                                       | 35        |
| What is medical neglect? .....  | 35        |
| What is Failure to Thrive?.....   | 36        |
| What do the terms “drug exposed child” and<br>“drug affected child” mean? ..... | 36        |
| <b>Abandonment and mental injury .....</b>                                      | <b>37</b> |
| What is abandonment? .....  | 37        |
| What is mental injury? .....  | 37        |
| <b>Threat of harm .....</b>   | <b>38</b> |
| What is threat of harm?.....  | 38        |
| When should domestic violence be reported as child abuse<br>or neglect? .....   | 38        |
| <b>What is child selling? .....</b>   | <b>40</b> |
| <b>Oregon child abuse reporting law.....</b>                                    | <b>41</b> |
| <b>DHS Child abuse reporting phone numbers .....</b>                            | <b>49</b> |



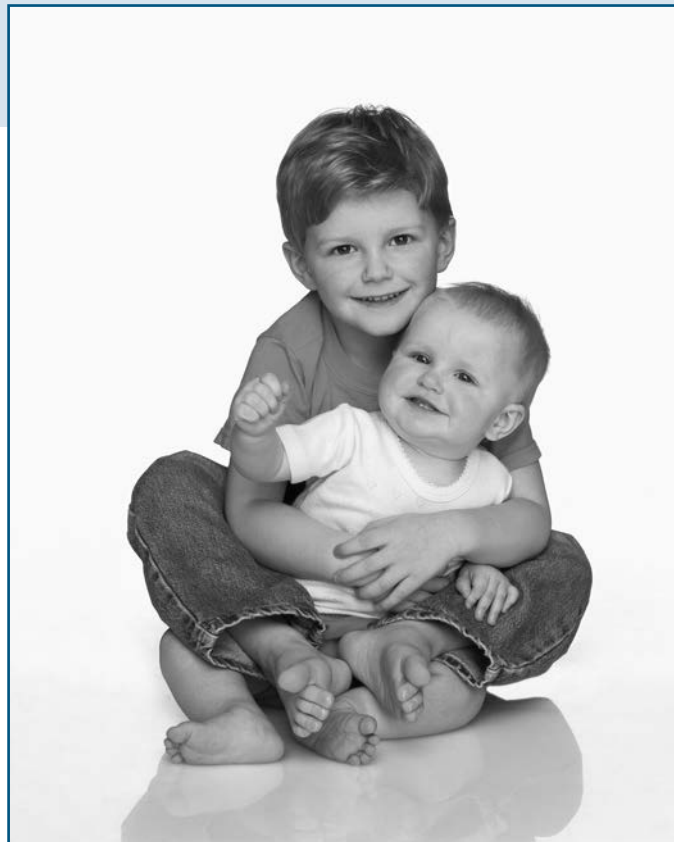




# Introduction

## Why do I need this information?

**M**andatory reporters — people who are required by law to report child abuse — are a crucial link in the child protection system. Nearly three quarters of all child abuse reports come from mandatory reporters. In many cases those community members are the only people outside the immediate family who see abused or neglected babies or small children.



*Every child deserves to be healthy and safe.*

All citizens have a responsibility to prevent child abuse and protect children.

An individual can help children in a variety of ways, from simply being a friend to protecting them from abuse. Communities can help provide the resources children and families need, such as safe day care or treatment services for child abuse victims. Mandatory reporters of child abuse, along with the Department of Human Services (DHS) and law enforcement officials, have a legal obligation for child protection.

We hope this booklet will help you understand child abuse, what to report, and when and how to report it, as well as give you an idea of what happens after you make a report of child abuse.

Here are some explanations of terms you will encounter as you read this material.

- DHS (CPS) and law enforcement — DHS and law enforcement agencies have a shared legal responsibility for taking child abuse reports and responding to them. Much of the information presented here about the child protective services (CPS) process also applies to law enforcement.

## WHAT YOU CAN DO ABOUT CHILD ABUSE

*Why do I need this information? — continued*

- Caregivers — CPS or law enforcement intervenes when a caregiver abuses or neglects a child. Because a caregiver is generally a parent, the word “parent” has been used throughout this manual to mean any caregiver, although a caregiver could also be someone like a baby sitter or guardian.
- Accidents — CPS and law enforcement always consider that an accident or illness may have caused a child’s injury when assessing abuse allegations. It is a fact of life that children have accidents and get injured.
- Categories of abuse — You do not need to define an injury as physical abuse, neglect, etc., when you make a report. This manual separates abuse into different categories to help you understand how the law defines abuse. What we need from you when you call us is simply specific, accurate information about a given child’s condition.
- Pronouns — The pronouns “he” and “she” are used interchangeably throughout this manual to describe children. Both genders are subject to all forms of abuse. The ratio in Oregon is approximately 52 percent female victims to 48 percent male victims.
- Abuse and neglect — Child welfare professionals often talk about both abuse and neglect because while abuse is usually an action taken against a child, neglect is the lack of action — usually the lack of care. Oregon law includes neglect as a category of abuse. Throughout this manual, “child abuse” includes physical abuse, sexual abuse and negligent treatment of children.

### What is the most important thing to remember?

You should report any reasonable suspicion of abuse; you do not have to prove it. If you suspect a child has been abused, phone your local DHS office to discuss your concerns with a staff person who is CPS-trained.

# Making a report

## What is reporting?

**A**s a mandatory reporter, if you suspect a child with whom you have had contact is being abused, or that a person with whom you have had contact has abused a child, you must tell either the Department of Human Services or the appropriate local law enforcement agency (city or state police, sheriff or county juvenile department).



*If you suspect a child with whom you have had contact is being abused, or that a person has abused a child, you must report it.*

## Who are mandatory reporters?

For a current and complete list of public or private officials who are mandatory reporters please refer to Oregon Revised Statute 419B.005 (3). Some of these mandatory reporters include:

- Physician or physician assistant licensed under ORS chapter 677 or naturopathic physician, including any intern or resident;
- Dentists;
- School employee, including an employee of a higher education institution;
- Licensed practical nurse, registered nurse, nurse practitioner, nurse's aide, home health aide or employee of an in-home health service;
- Employee of the Department of Human Services, Oregon Health Authority, Early Learning Division, Youth Development Division, Office of Child Care, the Oregon Youth Authority, a county health department, a community mental health program, a community developmental disabilities program, a county juvenile department, a licensed child-caring agency or an alcohol and drug treatment program;
- Peace officer;
- Psychologist;

## WHAT YOU CAN DO ABOUT CHILD ABUSE

### *Making a report — continued*

- Member of the clergy;
- Regulated social worker;
- Optometrist;
- Chiropractor;
- Certified provider of foster care, or an employee thereof;
- Attorney;
- Licensed professional counselor;
- Licensed marriage and family therapist;
- Firefighter or emergency medical services provider;
- A court appointed special advocate, as defined in ORS 419A.004;
- A child care provider registered or certified under ORS 329A.030 and 329A.250 to 329A.450;
- Member of the Legislative Assembly;
- Physical, speech or occupational therapist;
- Audiologist;
- Speech-language pathologist;
- Employee of the Teacher Standards and Practices Commission directly involved in investigations or discipline by the commission;
- Pharmacist;
- An operator of a preschool recorded program under ORS 329A.255;
- An operator of a school-age recorded program under ORS 329A.257;
- Employee of a private agency or organization facilitating the provision of respite services, as defined in ORS 418.205, for parents pursuant to a properly executed power of attorney under ORS 109.056;

- Employee of a public or private organization providing child-related services or activities:
  - » Including but not limited to youth groups or centers, scout groups or camps, summer or day camps, survival camps or groups, centers or camps that are operated under the guidance, supervision or auspices of religious, public or private educational systems or community service organizations; and
  - » Excluding community-based, nonprofit organizations whose primary purpose is to provide confidential, direct services to victims of domestic violence, sexual assault, stalking or human trafficking
- A coach, assistant coach or trainer of an amateur, semiprofessional or professional athlete, if compensated and if the athlete is a child.



*Pay close attention when a child tells you about being abused.*

## When does confidentiality override the need to report?

If you are a mandatory reporter, your obligation to make a report applies regardless of whether or not your knowledge of the abuse was gained in your official capacity.

Those people who have been granted the right of privileged communication by ORS 40.225 to 40.295 are not required to report information about abuse if the information is gained in a situation where the professional/client relationship is protected. If you have any questions, contact DHS or your licensing board.

## How do I make a report?

Generally, reports are made by phone because the law requires an oral report. Sometimes we may ask for additional written material, such as medical reports, when the information is needed to assess the condition or safety of the child.

Most DHS offices are open from 8 a.m. to 5 p.m. Most areas have hotlines or other ways to take calls after hours. If you need to report abuse after hours, contact your local law enforcement agency or child abuse hotline (phone numbers are listed in the back of this pamphlet).

When a report is made to DHS, we share it with appropriate law enforcement agencies and vice versa. You only need to report to one agency.

### What information should I have?

DHS cannot respond unless there is a specific allegation of abuse.

- “Mary seems withdrawn and quiet,” is not an allegation of abuse.
- If Mary comes to school with bruises on her face and tells you, “I don’t want to go home because my mom hit me,” you should report it.



*This is a very difficult time for children and they need your understanding, support and patience.*

Always pay close attention when a child tells you about being abused.

If possible, report the names and addresses of the child and parent; the child’s age; the type and extent of abuse, as well as any previous evidence of abuse; the explanation given for the abuse; and any other information that will help establish the cause of abuse or identify the abuser.

You do not need to know the name of the abuser before you make a report. The more information we can get from you, the easier the assessment will be for the child and family.

Also, the more quickly you get the information to us, the more likely we can respond effectively. Bruises and other physical marks can fade quickly, and it is important for us to have as complete a picture as possible.

### What information can I get from DHS after I make a report?

When you make a report, you can be told whether there is enough information for an assessment to be done. The person taking your report may not know before consulting with his or her supervisor.

Because the law requires that we keep information about child abuse reports confidential, you might not be told details of the abuse or the assessment.

However, we will try to give you information to the extent allowed by the law, including information that you need to continue helping the child. Unless the Department determines that disclosure is not permitted under ORS 419B.035, the Department is required to notify the reporter (if the reporter provided the



Department with contact information) whether contact was made, whether the Department determined that child abuse or neglect occurred, and whether services will be provided.

## What kinds of abuse am I likely to see?

The easiest abuse to recognize is something that leaves physical marks like bruises or burns. Some forms of neglect are somewhat visible such as malnutrition or young children left alone.

You may have a child tell you she is being abused. Realistically, it is difficult for someone who is not directly involved with a child and his family to see most forms of sexual abuse or mental injury. However, we often get reports on these situations from relatives and friends.

## If I see a suspicious mark on a child, should I investigate it?

The amount of questioning you should do depends on what is appropriate for your job. For example:

- As a doctor or nurse, it is good medical practice to ask about your patient's injuries.
- As a teacher, you might routinely comment on children's injuries (for example, showing sympathy for Richard's leg that was broken when he went skateboarding). It would then be appropriate to comment on injuries you think might be from abuse and listen to the child's response.

It is not appropriate for you to conduct an assessment of the situation. However, if possible, it is very helpful if you have been able to talk honestly and listen openly with the child. If the explanation does not seem to fit the injury, make a report.

## Do I have to prove abuse occurred?

No. Your report is a request for an assessment to be made. The law clearly states you must report any reasonable cause to believe a child with whom you came in contact has been abused. Then, either a CPS-trained worker or a law enforcement officer will conduct an assessment. Even if the assessment leads to the conclusion that the abuse report was unfounded, it still was appropriate for you to have made the report.

### What if I'm not sure it's abuse?

If you have questions about whether or not to report, please call your local DHS office to consult with CPS-trained staff. They can tell you if it is a situation that should be formally reported.

Sometimes different people have different information about a child. You might be the second or third person to call about a particular child, giving us the critical piece of information we need to be able to help.

### If I have a feeling that a child is being abused, but there are no marks on him and he hasn't said anything to me, should I report my suspicion?

Either DHS or a law enforcement officer will need a specific allegation of abuse before we can conduct an investigation. If you have a concern about a child, and you have a relationship with him that allows it, you could ask him about your concern in a non-threatening, non-leading way.

General questions like, "Is there anything wrong?" or "You look upset; is there something you want to talk about?" may help encourage him to talk to you.

### What should I say to a child who tells me she is being abused?

Let the child know she is not responsible for the abuse. Don't look shocked and don't talk about blaming anyone. Tell her you will get in touch with people who can help her, and let her know they will need to talk with her.

Take any story of abuse seriously, and report it.

Don't force her to tell more than she is ready to reveal. All you need to do is report a suspicion of abuse, not prove that it happened.

This is a very difficult time for children and they need your understanding, support and patience.



*All children react to stress differently. Some may act out or become withdrawn.*

## How will a child react after a report is made?

Even if abuse has occurred, it may be hard for the child to admit that he has been abused and it will be even harder for him to keep telling his story to the social workers, police officers, lawyers and others who may be involved in an abuse case.

How his family reacts will greatly affect how he reacts. Sometimes the non-abusing parent will immediately believe his story and support him. Sometimes parents or siblings do not believe him and pressure him to change his story.

Children are usually not removed from their homes when abuse is found. However, if a removal is necessary, DHS will try to maintain ties the child has to family, friends, schools, etc.

All children react to stress differently. Some may act out or become withdrawn. The important thing to realize is that the period after an abuse report is made is very difficult for children and they need special attention and care from you.

# Importance of reporting abuse

## What if I don't report?

Failure to report is a violation of the law and carries a maximum penalty of \$1,000.

Mandatory reporters also have been successfully sued for damages in civil court for failing to report.

## After I report, will my name be made public?

The only time a reporter's name can be released is by a court order. However, you might have to testify at juvenile court or criminal court proceedings about the child's condition.

## Can I be sued by the parent for making a report?

Anyone who makes a good-faith report based on reasonable grounds is immune from liability.

## What if the abuse happened a long time ago?

You should still report it. The abuser may have access to other children and his earlier history could be important. There is no statute of limitations on the reporting of child abuse.



*What if I don't report suspected abuse?*

## Should I make a report to my supervisor?

As a mandatory reporter, you must report to DHS or a law enforcement agency. Telling your supervisor does not fulfill your legal obligation.

Your employer may have internal policies asking you to inform your supervisor or other staff members. That is fine as long as you also make a formal report to DHS or law enforcement. It is important that we talk to the person closest to the original source of information so we can get all relevant details.

## How many cases of abuse are reported?

In federal fiscal year 2013, there were 64,305 reports of suspected child abuse or neglect made to DHS in Oregon. Child abuse or neglect was found in 6,900 of these reports.

## How important is my report?

Nearly seventy-two percent (71.6%) of the child abuse reports made in 2013 were made by mandatory reporters. In some cases, especially for small children, you may be the only person outside their family who sees them. The information you have is vital.

## Who decides what child abuse is?

Child abuse is defined in Oregon law. The different categories are:

- Physical abuse;
- Mental injury;
- Sexual abuse;
- Neglect;
- Threatened harm;
- Buying or selling a child;
- Permitting a person younger than 18 years of age to enter or remain in or upon premises where methamphetamines are being manufactured;

- Unlawful exposure to a controlled substance, as defined in ORS 475.005, that subjects a child to a substantial risk of harm to the child's health or safety.

A description of some of the types of abuse begins on page 26.

### Isn't it better to let families work out their own problems?

There are two good reasons to report abuse:

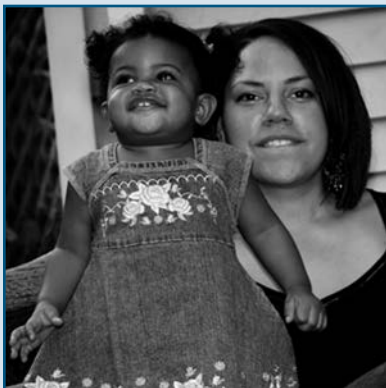
- » First, it is required by law. Some parents simply are unable or unwilling to protect their own children. The State of Oregon has declared that the health and safety of children are so important that mandatory reports and investigations are necessary.
- » Second, if caregivers are abusive, they can be given professional help to learn how to be better parents. Almost every parent wants what is best for his or her children. Some people have not developed the skills necessary to provide the care children need.

### Can other people report abuse?

Yes. Anyone can make a report of suspected abuse. They will be asked for the same information we need from mandatory reporters.

Voluntary reporters also have legal immunity as long as the reports are made in good faith.

Individuals sometimes want to report anonymously because they don't want family members to know they were involved. The only time a reporter's name can be released is by a court order.



Almost every parent wants what is best for his or her children. Some people have not developed the skills necessary to provide the care children need.

# Stresses of reporting abuse

## Why don't people report suspected abuse?

There are many reasons why people do not report.

- Many reporters have received little or no training about the symptoms of abused children. They are uncomfortable making such a serious accusation without more background in the field of child abuse and neglect.
- Some people are afraid of retaliation or being sued.
- Treatment professionals may see the reporting process as a sign their treatment has failed, or as a violation of confidentiality.
- Reporters may be reluctant to go through “bureaucratic red tape,” or they may feel it will do nothing to help the family.
- Over-identification with the family may lead to non-reporting because the mandatory reporter feels sorry for them.
- A previous report may not have been handled as the reporter thought appropriate; therefore the reporter decides not to make any more reports.

Although all of these feelings are valid, they focus on something other than the protection of a child in danger. A late report or a report that is not made may place a child's life in jeopardy. In Oregon, 10 children were killed by abuse or neglect in FFY 2013. Five of these deaths resulted from neglect. Four were caused by physical abuse. One was caused by both physical abuse and neglect.



*Reporting possible child abuse can be very stressful.*

## Is reporting abuse stressful for the reporter?

Yes, reporting possible child abuse can be very stressful.

- You may be concerned about a child for some time before you have enough information to be reasonably sure abuse has occurred.
- You may worry about adversely affecting your relationship with the child and/or family.
- You may get frustrated by having to spend time talking to the people assessing the report, or you may feel they are not acting quickly enough.
- You may be angry at the person who abused the child.
- You will almost certainly feel sorrow for the child.
- You may not be satisfied with the result of the investigation, thinking not enough was done or too much was done.
- You may feel guilty about intruding on a family.
- You may be generally depressed without knowing why.

## How can I help myself during this time?

It is important to recognize this is a very emotional process. You may wish to talk to your colleagues, a trusted friend or a counselor about your reactions.

There may be people with whom you work who have reported abuse. It may be particularly helpful to talk to them.



*You may wish to talk to your colleagues, a trusted friend or a counselor about your reactions.*





# The CPS Process

## What is child protective services?

Child Protective Services (CPS) is the part of DHS that responds to child abuse reports. CPS-trained caseworkers across the state listen to reports of abuse, assess the situations and prepare safety plans to assist children and families.

CPS staff work closely with law enforcement agencies and other members of multidisciplinary teams in each county to assess child abuse reports.



*Every report is handled by a CPS-trained worker*

## What happens after I make a report?

For each report CPS receives, the process begins with screening. If the information indicates possible abuse, a caseworker assesses the family situation by getting more in-depth information, and determines whether abuse occurred and whether a child is safe.

If a child has been abused or neglected, CPS and law enforcement staff decide, with family help if possible, whether the child can safely be left at home. Conditions, behaviors and circumstances of the family are assessed to determine if safety threats exist in the family, to identify the child's vulnerabilities, and to determine if the caregiver can or will protect the child. A protective action may be taken immediately to ensure the child's safety while the assessment continues. Later, the agency and family, if necessary, may develop an ongoing safety plan for the child or children.

A case is closed when protective services staff determine they are no longer needed to keep the child safe.

## What is screening?

Every report is handled by a CPS-trained worker, who makes the initial determination of whether a report meets the criteria that require DHS to conduct an assessment of the family.

Every report will fall into one of five categories:

- Information only;
- Referral to other services;
- Not a situation of child abuse or neglect;
- Family support services needed;
- Possible child abuse or neglect.

Reports that find possible abuse are further analyzed to determine whether an immediate response is needed.

## What is an assessment?

In many cases after screening, a CPS-trained worker will conduct an assessment to determine whether a child is safe.

The assessment includes talking to the child and caregivers and may include talking to family members and other people involved with the child (such as teachers or medical professionals).

After gathering information and before an assessment is completed, the information is reviewed to determine if the assessment disposition is founded, unfounded or unable to determine, or if no disposition is required.

A founded designation means there is reasonable cause to believe that abuse or neglect occurred.

### How is a decision made about the child's safety?

If child abuse occurred, our first responsibility is to protect the child from immediate harm. A process for determining the safety of the child takes into account the type of abuse, the vulnerability of the child, family history, protective capacity of the family and the potential for re-abuse.

The child should stay at home with his family if his safety can be assured. In most cases, the family is willing and able to protect the child from further abuse. One alternative to removing a child from the home might be providing intensive family counseling or other needed services on an emergency basis.

If the safety of a child cannot be assured in the home, an out-of-home safety plan is developed. When this is necessary, DHS will first consider whether a relative can provide safety.

### What is a case plan?

A caseworker will discuss concerns and potential solutions with the family, and work with them to develop a case plan acceptable to both DHS and the family. This may be done in a family meeting.

The intent of a case plan is to identify the parents' protective capacities, and to identify what protective capacities can be enhanced so the parents can manage the future safety and well-being of their child.

Families may be referred to programs provided by DHS or to services provided by other organizations in the community.

For example, parent trainers can help parents establish fair, consistent rules for family behavior.

The family may be asked to voluntarily receive services, or services may be ordered by the court.

## When is a child protective services case closed?

A CPS case may be closed for several reasons:

- A screener determines that information received during screening does not meet the statutory definition of child abuse or neglect.
- The CPS assessment has determined the child is safe.
- The CPS assessment does not identify information sufficient to request juvenile court intervention or the juvenile court declines to intervene, and the parents or caregivers do not request or agree to voluntarily receive services.

## Does DHS do a face-to-face interview with every child who is the subject of a report?

When a report of child abuse or neglect is received, a CPS-trained caseworker may be assigned to contact the child and his family. A child who is the subject of the report will be interviewed, or observed if too young to be interviewed. Siblings are interviewed or observed as well. If parents cannot be notified before the interview with their children, they are notified as soon as possible when their children have been interviewed.

## May I be a part of the assessment interview with the child?

Oregon law gives CPS-trained workers or law enforcement officers the discretion to decide how to structure the assessment. A CPS-trained caseworker or law enforcement officer might ask a person who is trusted by the child, such as a teacher, to join them in the interview.

## If a child is being abused, will you remove him from his home?

In Oregon in 2013, an average of 8,447 children were in some kind of foster care each day (almost 43.1 percent of family foster care is relative care). Even while in foster care, the goal for the child is to reunite her with her family whenever possible. Family visits and other services are offered to help family members learn the skills they need to ensure the safety and well-being of children.

### Does DHS offer parents any alternatives to removing their children?

In most cases, DHS believes the best way to protect a child is by strengthening his parents' ability to take care of him. We offer a number of services to families, and help families to use the resources of relatives, friends and the local community.

When a child needs to be temporarily removed from home, we try to find a way to reunite the family while assuring the child's safety.

### When can DHS decide to remove a child?

DHS has the authority to remove a child from home if he is in immediate danger of abuse. This can be done several ways:

- A court order may authorize DHS or law enforcement to place the child in protective custody.
- A law enforcement officer may take a child into protective custody.
- A CPS-trained caseworker may remove a child from home if the child is in immediate danger.

### If a child is taken into protective custody from school, who notifies the parents?

Whether it is DHS or a law enforcement agency that takes a child into custody, that agency must make a reasonable effort to notify the child's parents and the organization from which the child was removed (such as a school or day care).

According to the Oregon Attorney General (OP-5957 from 1986), if a child is removed from school, the school staff may only tell the parents:

"Personnel from [DHS or a law enforcement agency] removed the child from school. You will be contacted by personnel from that office. I am prohibited by Oregon law from providing any further information."

## After a child is removed, who reviews the decision?

When a child is taken into protective custody, the situation is reviewed by the juvenile court within 24 judicial hours. The court then decides, based on the child's safety, whether he should be returned to his parents or kept in custody.

Later, the court also will review and approve the case plan for the family.

## Who else reviews DHS actions?

- Citizen Review Boards (CRBs) are set up in each county to review all cases in which children are removed from their homes and remain in DHS custody for six months or more. Board members are appointed by Oregon's Chief Justice of the Supreme Court. CRBs make recommendations to the local circuit court about the case, including:
  - » Whether substitute care should be continued;
  - » Compliance with the case plan; or
  - » Whether reasonable efforts have been made to reunite the child with his or her parents.
- As with all state agencies, the Oregon Legislature reviews the activities of DHS and approves its budget every two years.
- An advisory committee is established by law. Its members are appointed by a DHS director to act in an advisory capacity on key child welfare issues.

## Does DHS prosecute abusive parents?

No. Only a district attorney can prosecute a crime. District attorneys receive reports of possible criminal behavior from law enforcement officers, and decide whether or not to pursue prosecution.

## Who is allowed access to the case file?

Most of the information in child abuse case files is confidential and is exempt from the public records law. It can be released under some conditions to certain people and organizations that have a need to know. Some parts of the case file (for example, psychological evaluations) cannot be released except by court order or with the agreement of the provider.

Information released must be kept confidential by the person or agency who receives it. It may be released to:

- A law enforcement agency or child abuse registry in another state that is doing an investigation of abuse;
- A physician examining or treating the child;
- Attorneys for the child or child's parent in a juvenile court proceeding;
- Citizen Review Boards that review the status of children in the jurisdiction of the juvenile court;
- A Court Appointed Special Advocate (CASA) who is working with the child in juvenile court;
- The Child Care Division of the Employment Department if the family is applying for license to be a day care provider;
- Seniors and People with Disabilities Division if the family is involved with this program or wants to be a foster care provider under this program;
- A tribe, if a family member is a recognized member of the tribe;
- A DHS director may release information to other hearings officers, courts, or organizations if:
  - » - It is in the best interest of the child;
  - » - It is necessary to investigate, prevent or treat child abuse;
  - » - It will help protect children from abuse.

### Cultural sensitivity — does DHS take cultural child rearing practices into consideration?

Yes. DHS takes several steps to help staff and clients communicate across cultures.

- Cultural awareness is a part of DHS staff training. This includes information on specific cultural practices that may be mistakenly labeled abuse. It also teaches staff to be aware of their own cultural biases and to recognize the strength each of us draws from our cultural heritage.



- Each office has access to interpreters for non-English speaking clients, and some staff speak Spanish, Russian, Vietnamese, etc.

## What kind of training do caseworkers get?

CPS caseworkers must complete a comprehensive program that covers all aspects of child abuse, including:

- Symptoms of abuse;
- How to screen incoming reports of abuse;
- How to assess the future safety of a child;
- How to conduct an assessment of the family;
- How to interview victims, witnesses and alleged abusers;
- When to ask for law enforcement assistance;
- How to decide if abuse actually has occurred;
- How to decide on appropriate services and write a service plan;
- When to close a case; and
- Many other needed skills.

In addition, all CPS supervisors and caseworkers are offered in-service training to continually upgrade their knowledge and skills.

Law enforcement officers must be certified by the Board on Public Safety Standards and Training. The certification program includes training on child abuse issues.

## What are multidisciplinary teams (MDTs)?

District attorneys are required to convene multidisciplinary teams to review child abuse cases. There are teams working in every county in Oregon. By legal mandate, they develop protocols to ensure the coordination of child abuse investigations.



*CPS caseworkers complete a comprehensive training program that covers all aspects of child abuse.*

Child abuse is not just a DHS issue. The best way to protect children and strengthen families is through coordination of community services, including law enforcement, medical professionals, school officials, the district attorney, etc. That philosophy became part of Oregon's law with the passage of SB 967 in the 1989 legislative session.

These teams do a number of things:

- Coordinate information among social service agencies and law enforcement agencies working with the same families;
- Review selected cases and look at the services that have been offered, and develop additional services the community needs;
- Establish procedures for reviewing complex cases and joint decision making;
- Develop agreements among the various agencies that provide services in cases of child abuse and neglect;
- Hospital-based teams can review and coordinate medical aspects of cases.

Multidisciplinary teams also conduct child fatality reviews. The purpose of the review is to:

- Identify all preventable child deaths in Oregon;
- Identify specific factors that contributed to the deaths;
- Promote implementation of recommendations both at the systems level and individual level that might prevent future deaths of this nature.



Anyone can report suspected child abuse. A late report or a report that is not made may place a child's life in danger.



# Frequency of child abuse

## How common is child abuse?

In Oregon, 10,630 victims of child abuse and neglect were identified by DHS in FFY 2013. This is a 4.1 percent increase from the previous year. There were 64,305 reports made of suspected child abuse and neglect, down 4.5 percent from the previous year.

Family members account for 94 percent of all alleged abusers. More than 42 percent of alleged abusers are the child's mother, and almost 36 percent are the father.

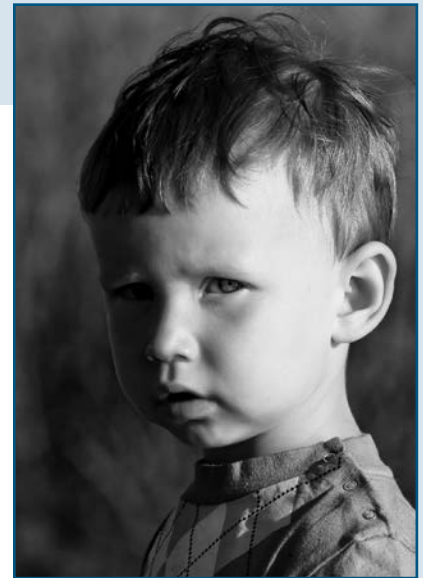
Children of every age are abused and neglected in Oregon, but the group that is most in danger *Children of every age are abused and neglected in Oregon, but the group that is most in danger are under the age of one.* They constitute 12.8 percent of all abused and neglected children.

Abusive families often have at least one of the following stresses:

- Substance abuse by parent;
- Unemployment;
- Parental involvement with law enforcement;
- Domestic violence.

## What about deaths from abuse?

Child deaths continue to be a tragic result of abuse and neglect. Data for FFY 2013 indicates that 10 children were killed by abuse and neglect in Oregon. Five of these deaths resulted from neglect. Four were caused by abuse. One death was caused by both abuse and neglect.



*Children of every age are abused and neglected in Oregon, but the group that is most in danger is from birth to 2 years old.*

# Physical abuse

## What is physical abuse?

Oregon law defines physical abuse as any injury to a child that is not accidental.

Most parents do not intend to hurt their children, but abuse is defined by the effect on the child, not the motivation of the parents.

In Oregon in FFY 2013, 987 children were found to have been physically abused.



*Trauma to the eyes is often the result of head injuries.*

## What about bruises?

Bruises on bony surfaces such as knees, shins, foreheads or elbows are more likely to be accidental than those occurring on the cheeks, buttocks or stomach.

Most falls produce one bruise on a single surface, while abusive bruises frequently cover many areas of the body.

Any bruising seen on babies who are not yet mobile is suspicious.

## What about head and facial injuries?

Injury to the skull and brain is the primary cause of child abuse deaths. Most serious internal head injuries during the first year of life are the result of physical abuse.

Trauma to the eyes is often the result of head injuries. This could be from a direct blow to the eyes or be the result of other actions, such as shaking a child, leading to retinal hemorrhage. Injury to both eyes is a possible indicator of abuse because accidental injuries usually occur on one side of the face.

The mouth is a common target for abuse. Injuries to this area include bruises, burns, split lips, broken teeth and even fractures of the jaw.

### What about broken bones and injured joints?

You should be suspicious of abuse when:

- Unsuspected fractures are “accidentally” discovered in the course of an examination.
- The injury is not explained by the history given.
- Spiral fractures, which indicate twisting, are found.
- Multiple fractures exist, especially when symmetrical.
- Multiple fractures exist in various stages of healing.
- Skeletal injuries are accompanied by injuries (for example, burns) to other parts of the body.

### What about poisoning?

Some parents may punish children by forcing them to swallow toxic amounts of chemicals or food.

Some problems — any of which may be fatal — are:

- Water — Drinking huge quantities of water causes seizures, convulsions, confusion, lethargy and coma.
- Hot peppers — Cause damage to the mucous membranes of the mouth and stomach and injure the nervous system. Hot peppers can also become clogged in the child’s throat, leading to breathing problems.
- Ground pepper — Becomes clogged in the throat or lungs, causing breathing problems.
- Laxatives — Cause severe dehydration, fever and bloody stools.
- Household products — Various substances are abused, including toilet bowl cleaner, lighter fluid, detergents and oil.

## What about burns and scalds?

Although accidental burns may happen in any household, too many or improperly handled accidents can be signs of neglect.

It is not uncommon for a child to brush against a cigarette that is being held in someone else's hand. These burns are usually found on the child's face, arms or trunk, depending on the height of the child and the height of the person holding the cigarette.

"Doughnut" burns on the child's buttocks are an indication that the child's buttocks may have been pressed against the bottom of the bath tub of hot liquid so that part of the buttocks were not burned.

"Stocking" burns are those that result from a foot or hand dunked into scalding liquid. The skin is usually burned evenly.

"Scattered" burns can be caused by pouring or throwing hot liquid. These burns show varying levels of injury.

## What about internal injuries?

Only a small percentage of child abuse cases report injuries to internal organs. However, internal injuries are hard to identify in child abuse cases and may be one of the underlying causes of death or may make a child more susceptible to pneumonia or other infection that may cause death.

Although there are no absolute guidelines for symptoms of internal injuries, here are some common indicators:

- Pain in stomach, chest or any internal area;
- Bruises on the chest or stomach;
- Distended, swollen abdomen;
- Tense abdominal muscles;
- Labored breathing;
- Severe chest pain while breathing;
- Nausea or vomiting (especially blood).

## What is Intentional Traumatic Brain Injury?

Intentional Traumatic Brain Injury describes a head injury caused by shaking the child severely or striking a child's head against a surface. Many parents do not understand that these actions can cause severe brain injury, blindness and even death.

The most common injuries are:

- Blood clots around the brain;
- Hemorrhages of the retina;
- Fractures in the growing portion of the bone;
- Injury to the brain;
- Bruises on the extremities or bruising and injury of the chest, where the child was held while being shaken.

## Is spanking child abuse?

Although not recommended, spanking is not abuse. However, a spanking that leaves marks or bruises on a child might be abuse. Spanking a baby is always a concern.



Most parents do not intend to hurt their children, but abuse is defined by the effect on the child, not the motivation of the parents.



# Sexual abuse and sexual exploitation

## What is child sexual abuse?

Child sexual abuse occurs when a person uses or attempts to use a child for sexual gratification. This includes incest, rape, sodomy, sexual penetration, fondling, voyeurism, etc.

In Oregon in FFY 2013, 860 children were found to have been sexually abused.



*A father who is abusing his daughter may warn her if she tells anyone, the family will be broken up and everyone will blame her.*

## What is fondling?

Fondling includes touching sexual parts of the body, such as breasts, genitals or buttocks. This may include an adult having a child touch the sexual parts of his body.

## What is sexual contact?

Sexual contact includes rape, sodomy, incest, sexual penetration, etc.

## What is sexual harassment?

Sexual harassment includes intimidating or pressuring a child for sexual activities.

## What are exposure and voyeurism?

These include someone exposing himself to a child, or exposing the genitals of a child, for the adult's sexual gratification.

## Why do children keep quiet about being sexually abused?

Persons who sexually abuse children rely on many methods to force children to keep quiet. The abuser may be subtle, telling the child he or she is doing it for her own good or promising her favors or gifts. Or he may be more blatant, such as a father warning his daughter if she tells anyone, the family will be broken up and everyone will blame her.

The abuser may convince the child she is an equal partner, that he has special affection for her and will be blamed if disclosure is made.

Many abusers use threats, telling the child his pets will be hurt, that his siblings will be targeted, or even the child himself will be killed if he tells.

Children need adults to provide their basic needs: food, a place to live, clothing, access to family and loved ones. Abusers deliberately exploit that dependency to make children submit to them.



*Research and experience have shown that children very rarely lie about the details of a sexual act that they have not experienced.*

### How often do children lie about being abused?

Research and experience have shown that children very rarely lie about the details of a sexual act that they have not experienced. It is much more common for adults to misunderstand or misconstrue a situation.

As a result, the child often blames herself for what is happening to her and feels guilty and depressed. She may create imaginary companions. Some children become aggressive and angry. Others turn to drugs and alcohol.

### What is sexual abuse of teens?

Oregon law does not make all sexual activity of a teen under the age of 18 illegal.

The law includes defenses in some circumstances if the actor is less than three years older than the victim. Law enforcement and district attorneys will need to analyze each situation on a case-by-case basis.

For teens, evidence of sexual activity may be a potential indicator of sexual abuse. Consenting sexual relationships imply that both partners have the ability and capacity to make an informed choice without fear of harm or pressure. However, many teens do not have a clear understanding of the difference between consensual and abusive relationships.

Factors to consider in determining whether a relationship may be abusive include:

- If force is used;
- If there is impaired mental or emotional capacity;
- If drugs or alcohol affect the ability to make a reasonable choice;
- If there is manipulation, intimidation, implied threats or other forms of coercion;
- If there is a distinct power differential or a significant age difference.

## What is sexual exploitation?

Sexual exploitation is using children in a sexually explicit way for personal gain; e.g., to make money, to obtain food stamps or drugs, or to gain status. It also includes using children in prostitution and using children to create pornography.



*Many teens do not have a clear understanding of the difference between consensual and abusive relationships.*

# Neglect

## What is neglect?

Neglect is failing to provide adequate food, clothing, shelter, supervision or medical care. Chronic neglect is a persistent pattern of family functioning in which the parent or caregiver does not sustain or meet the basic needs of a child. This results in an accumulation of harm that can have long term effects on the child's overall physical, mental or emotional development.

Neglect is the most common form of abuse and may have long-term effects. In FFY 2013, 5,330 children were victims of neglect.

Neglect is one of the most common contributors to child fatalities.

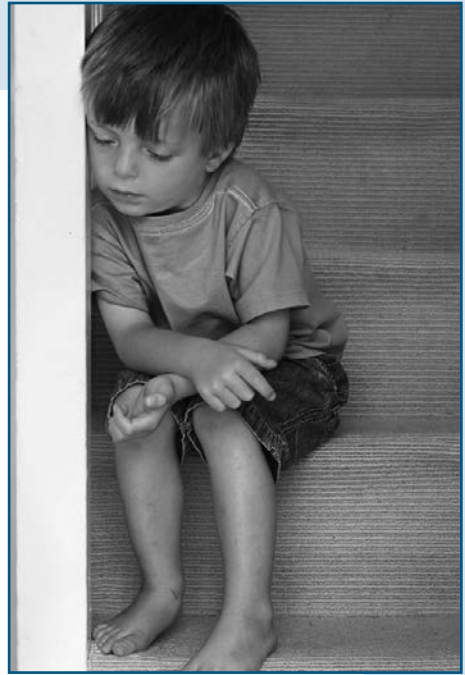
## What are the standards for supervision and protection?

Parents must provide adequate supervision, care, guidance and protection to keep children from physical or mental harm. Parents must also provide appropriate treatment for children's problems.

Children will have minor injuries during childhood. When accidental injuries are frequent, they may be the result of neglect.

Neglect includes exposing a child to illegal activities such as:

- Encouraging a child to participate in drug sales, theft, etc.;
- Exposing a child to parental drug abuse, theft, etc.;
- Encouraging a child to use drugs or alcohol.



*Failure to Thrive is a syndrome characterized by chronic malnutrition of an infant or young child.*

## What are the standards for child care?

Safe child care includes:

- A designated person who can take care of a child's individual needs;
- A plan to reach the parent in an emergency.

A child should not be left alone in situations beyond his ability to handle.

Each child must be looked at individually to make sure he or she is physically and emotionally able to handle the given responsibility. The law does not specify the age at which a child can be left alone. However, a child younger than age 10 cannot be left unattended for such a period of time as may likely endanger the child's health or welfare (ORS 163.545).

## What are the standards for food and clothing?

Children need food that allows them to grow and develop normally. Clothing and shoes should be appropriate to the environment.

## What are the standards for shelter?

Children need protection from weather and safety hazards. This includes adequate heat, drinking water, sanitary facilities and space for sleeping.

## What is medical neglect?

Children need adequate medical, dental and mental health care services. When a medical situation may result in serious impairment, pain or death of the child, this may be medical neglect and CPS can intervene.

Religious beliefs about spiritual care are generally honored, except when the child's life is in danger. If a parent refuses medical attention in a serious or life-threatening situation, CPS may intervene.

### What is Failure to Thrive?

Failure to Thrive is a syndrome characterized by chronic malnutrition of an infant or young child. Growth is delayed and mental retardation, learning difficulties and delay in language skills are some of the long-term consequences.

Characteristics include:

- A weak, pale and listless appearance;
- Loss of body fat;
- Staring vacantly instead of smiling and maintaining eye contact;
- Sleeping in a curled up, fetal position with fists tightly closed;
- Rocking back and forth in bed as he lies on his back or banging his head repeatedly against his crib;
- Obvious delays in developmental and motor function.

### What do the terms “drug exposed child” and “drug affected child” mean?

Misuse of prescription drugs or use of illegal drugs is neglect when the use directly impacts the child. While alcohol and drug use during pregnancy is never a good idea, many women do not realize the dangers drug use or addiction can present to children during pregnancy. Some affects may not be apparent at birth but can show up later.

Any alcohol or drug use by a pregnant woman means a child has been “drug exposed” during the pregnancy. When drug use creates physical, mental or behavioral problems, whether apparent at the birth of a child or as the child grows, the child may be considered “drug affected.” But these drug affects must be confirmed through medical evaluation. They can include a range of issues from major physical problems to mental or behavioral problems that emerge as late as the child’s entry into school.



# Abandonment and mental injury

## What is abandonment?

**A**bandonment is parental behavior showing intent to permanently give up all rights and claims to a child.



## What is mental injury?

Mental injury and psychological maltreatment are the result of cruel or unconscionable acts or statements threatened, made, or permitted to be made by the caregiver(s), which have a direct effect on the child or it can be the caregiver's failure to provide nurturance, protection or appropriate guidance. The caregiver's behavior, intentional or unintentional, must be related to the observable and substantial impairment of the child's psychological, cognitive, emotional or social well-being and functioning. In Oregon in FFY 2013, 179 children were found to be subjected to mental injury.

Some examples of mental injury include:

- Holding a child's head in the toilet as punishment;
- Stripping a child and chaining him to a tree for punishment;
- Exposing or forcing a child to repeatedly watch domestic violence against his parent or siblings;
- Shutting a child out of the family by not buying her adequate clothing or personal items. An example would be furnishing other children's rooms with nice things and keeping her bedroom empty.

# Threat of harm

## What is threat of harm?

**T**hreat of harm is subjecting a child to a substantial risk of harm to his or her health or welfare. Severe harm is defined as significant or acute injury to a child's physical, sexual, psychological, cognitive, or behavioral development or functioning; immobilizing impairment; or life threatening damage.

There were 5,788 founded incidents of threat of harm in Oregon in FFY 2013.

Some examples of threat of harm are:

- A child living with or cared for by a person who has a past conviction for child abuse or neglect, and whose current behavior, condition and circumstances present a substantial threat to the safety of a child;
- A newborn whose primary caregiver's current mental or behavioral condition indicates a lack of skills necessary to provide adequate care even though the child has not suffered harm;
- A child living with a person who is involved in child pornography;
- A child whose parent or caregiver has caused death or severe harm to another child through physical abuse, and whose behaviors, conditions or circumstances have not improved.

## When should domestic violence be reported as child abuse or neglect?

Domestic violence means a pattern of coercive behavior, which can include physical, sexual, economic, and emotional abuse that an individual uses against a past or current intimate partner to gain power and control in a relationship.



*If you know a child is witnessing repeated or serious domestic violence and you are unsure of the impact on the child, call and consult with a CPS screener.*



Domestic violence is present in all cultures, socioeconomic classes, and communities of faith. Domestic violence generally increases in intensity, severity and frequency.

The presence of domestic violence is a risk factor for children. However, not all situations of domestic violence require a report to DHS or law enforcement. DHS has the authority to intervene with families based on whether a child is being physically abused, sexually abused, neglected, suffering mental injury, or is being subjected to an activity or condition likely to result in substantial harm.

A report to DHS or law enforcement is necessary when there is reasonable cause to believe:

1. There is current domestic violence or the alleged abuser has a history of domestic violence; and
2. One of the following:
  - » There is a reason to believe the child will intervene or is intervening in a violent situation, placing him at a risk of substantial harm.
  - » The child is likely to be harmed during the violence (being held during the violence, physically restrained from leaving, etc.).
  - » The alleged abuser is not allowing the adult caregiver and child access to basic needs, impacting their health or safety.
  - » The alleged abuser has killed or inflicted substantial harm, or is making a believable threat to do so to anyone in the family, including extended family members and pets.
  - » The child's ability to function on a daily basis is substantially impaired by being in a constant state of fear.

If you believe a child is witnessing repeated or serious domestic violence and you are unsure of the impact on the child, call and consult with a CPS screener.



*The presence of domestic violence is a risk factor for children.*

# Child selling

An additional category of abuse — child selling — was added to statute by the 1997 Oregon Legislature. This includes buying, selling or trading for legal or physical custody of a child. It does not apply to legitimate adoptions or domestic relations planning.



# Oregon child abuse reporting law

## Reporting of child abuse

**419B.005 Definitions.** As used in ORS 419B.005 to 419B.050, unless the context requires otherwise:

(1)(a) "Abuse" means:

- (A) Any assault, as defined in ORS chapter 163, of a child and any physical injury to a child which has been caused by other than accidental means, including any injury which appears to be at variance with the explanation given of the injury.
- (B) Any mental injury to a child, which shall include only observable and substantial impairment of the child's mental or psychological ability to function caused by cruelty to the child, with due regard to the culture of the child.
- (C) Rape of a child, which includes but is not limited to rape, sodomy, unlawful sexual penetration and incest, as those acts are described in ORS chapter 163.
- (D) Sexual abuse, as described in ORS chapter 163.
- (E) Sexual exploitation, including but not limited to:
  - (i) Contributing to the sexual delinquency of a minor, as defined in ORS chapter 163, and any other conduct which allows, employs, authorizes, permits, induces or encourages a child to engage in the performing for people to observe or the photographing, filming, tape recording or other exhibition which, in whole or in part, depicts sexual conduct or contact, as defined in ORS 167.002 or described in ORS 163.665 and 163.670, sexual abuse involving a child or rape of a child, but not including any conduct which is part of any investigation conducted pursuant to ORS 419B.020 or which is designed to serve educational or other legitimate purposes; and
  - (ii) Allowing, permitting, encouraging or hiring a child to engage in prostitution as described in ORS 167.007 or a commercial sex act as defined in ORS 163.266, to purchase sex with a minor as described in ORS 163.413 or to patronize a prostitute as described in ORS 167.008.
- (F) Negligent treatment or maltreatment of a child, including but not limited to the failure to provide adequate food, clothing, shelter or medical care that is likely to endanger the health or welfare of the child.
- (G) Threatened harm to a child, which means subjecting a child to a substantial risk of harm to the child's health or welfare.
- (H) Buying or selling a person under 18 years of age as described in ORS 163.537.

- (I) Permitting a person under 18 years of age to enter or remain in or upon premises where methamphetamines are being manufactured.
- (J) Unlawful exposure to a controlled substance, as defined in ORS 475.005, that subjects a child to a substantial risk of harm to the child's health or safety.
- (b) "Abuse" does not include reasonable discipline unless the discipline results in one of the conditions described in paragraph (a) of this subsection.
- (2) "Child" means an unmarried person who is under 18 years of age.
- (3) "Higher education institution" means:
  - (a) A community college as defined in ORS 341.005;
  - (b) A public university listed in ORS 352.002;
  - (c) The Oregon Health and Science University; and
  - (d) A private institution of higher education located in Oregon.
- (4) "Law enforcement agency" means:
  - (a) A city or municipal police department.
  - (b) A county sheriff's office.
  - (c) The Oregon State Police.
  - (d) A police department established by a university under ORS 352.383 or 353.125.
  - (e) A county juvenile department.
- (5) "Public or private official" means:
  - (a) Physician or physician assistant licensed under ORS chapter 677 or naturopathic physician, including any intern or resident.
  - (b) Dentist.
  - (c) School employee, including an employee of a higher education institution.
  - (d) Licensed practical nurse, registered nurse, nurse practitioner, nurse's aide, home health aide or employee of an in-home health service.
  - (e) Employee of the Department of Human Services, Oregon Health Authority, Early Learning Division, Youth Development Division, Office of Child Care, the Oregon Youth Authority, a county health department, a community mental health program, a community developmental disabilities program, a county juvenile department, a licensed child-caring agency or an alcohol and drug treatment program.
  - (f) Peace officer.
  - (g) Psychologist.
  - (h) Member of the clergy.
  - (i) Regulated social worker.
  - (j) Optometrist.

- (k) Chiropractor.
- (L) Certified provider of foster care, or an employee thereof.
- (m) Attorney.
- (n) Licensed professional counselor.
- (o) Licensed marriage and family therapist.
- (p) Firefighter or emergency medical services provider.
- (q) A court appointed special advocate, as defined in ORS 419A.004.
- (r) A child care provider registered or certified under ORS 329A.030 and 329A.250 to 329A.450.
- (s) Member of the Legislative Assembly.
- (t) Physical, speech or occupational therapist.
- (u) Audiologist.
- (v) Speech-language pathologist.
- (w) Employee of the Teacher Standards and Practices Commission directly involved in investigations or discipline by the commission.
- (x) Pharmacist.
- (y) An operator of a preschool recorded program under ORS 329A.255.
- (z) An operator of a school-age recorded program under ORS 329A.257.
- (aa) Employee of a private agency or organization facilitating the provision of respite services, as defined in ORS 418.205, for parents pursuant to a properly executed power of attorney under ORS 109.056.
- (bb) Employee of a public or private organization providing child-related services or activities:
  - (A) Including but not limited to youth groups or centers, scout groups or camps, summer or day camps, survival camps or groups, centers or camps that are operated under the guidance, supervision or auspices of religious, public or private educational systems or community service organizations; and
  - (B) Excluding community-based, nonprofit organizations whose primary purpose is to provide confidential, direct services to victims of domestic violence, sexual assault, stalking or human trafficking.
- (cc) A coach, assistant coach or trainer of an amateur, semiprofessional or professional athlete, if compensated and if the athlete is a child. [1993 c.546 §12; 1993 c.622 §1a; 1995 c.278 §50; 1995 c.766 §1; 1997 c.127 §1; 1997 c.561 §3; 1997 c.703 §3; 1997 c.873 §30; 1999 c.743 §22; 1999 c.954 §4; 2001 c.104 §148; 2003 c.191 §1; 2005 c.562 §26; 2005 c.708 §4; 2009 c.199 §1; 2009 c.442 §36; 2009 c.518 §1; 2009 c.570 §6; 2009 c.595 §364; 2009 c.633 §10; 2009 c.708 §3; 2010 c.60 §§4,5; 2011 c.151 §12; 2011 c.506 §38; 2011 c.703 §34; 2012 c.37 §60; 2012 c.92 §1; 2013 c.129 §26; 2013 c.180 §40; 2013 c.623 §17; 2013

c.624 §82; 2013 c.720 §11]

**419B.007 Policy.** The Legislative Assembly finds that for the purpose of facilitating the use of protective social services to prevent further abuse, safeguard and enhance the welfare of abused children, and preserve family life when consistent with the protection of the child by stabilizing the family and improving parental capacity, it is necessary and in the public interest to require mandatory reports and investigations of abuse of children and to encourage voluntary reports. [1993 c.546 §13]

**419B.010 Duty of officials to report child abuse; exceptions; penalty.** (1) Any public or private official having reasonable cause to believe that any child with whom the official comes in contact has suffered abuse or that any person with whom the official comes in contact has abused a child shall immediately report or cause a report to be made in the manner required in ORS 419B.015. Nothing contained in ORS 40.225 to 40.295 or 419B.234 (6) affects the duty to report imposed by this section, except that a psychiatrist, psychologist, member of the clergy, attorney or guardian ad litem appointed under ORS 419B.231 is not required to report such information communicated by a person if the communication is privileged under ORS 40.225 to 40.295 or 419B.234 (6). An attorney is not required to make a report under this section by reason of information communicated to the attorney in the course of representing a client if disclosure of the information would be detrimental to the client.

(2) Notwithstanding subsection (1) of this section, a report need not be made under this section if the public or private official acquires information relating to abuse by reason of a report made under this section, or by reason of a proceeding arising out of a report made under this section, and the public or private official reasonably believes that the information is already known by a law enforcement agency or the Department of Human Services.

(3) The duty to report under this section is personal to the public or private official alone, regardless of whether the official is employed by, a volunteer of or a representative or agent for any type of entity or organization that employs persons or uses persons as volunteers who are public or private officials in its operations.

(4) The duty to report under this section exists regardless of whether the entity or organization that employs the public or private official or uses the official as a volunteer has its own procedures or policies for reporting abuse internally within the entity or organization.

(5) A person who violates subsection (1) of this section commits a Class A violation. Prosecution under this subsection shall be commenced at any time within 18 months after commission of the offense. [1993 c.546 §14; 1999 c.1051 §180; 2001 c.104 §149; 2001 c.904 §15; 2005 c.450 §7; 2012 c.92 §11]

**419B.015 Report form and content; notice.** (1)(a) A person making a report of child abuse, whether the report is made voluntarily or is required by ORS 419B.010, shall make an oral report by telephone or otherwise to the local office of the Department of Human Services, to the designee of the department or to a law enforcement agency within the county where the person making the report is located at the time of the contact. The report shall contain, if known, the names and addresses of the child and the parents of the child or other persons responsible for care of the child, the child's age, the nature and extent of the abuse, including any evidence of previous abuse, the explanation given for the abuse and any other information that the person making the report believes might be helpful in establishing the cause of the abuse and the identity of the perpetrator.

(b) When a report of child abuse is received by the department, the department shall notify a law enforcement agency within the county where the report was made. When a report of child abuse is received by a designee of the department, the designee shall notify, according to the contract, either the department or a law enforcement agency within the county where the report was made. When a report of child abuse is received by a law enforcement agency, the agency shall notify the local office of the department within the county where the report was made.

(2) When a report of child abuse is received under subsection (1)(a) of this section, the entity receiving the report shall make the notification required by subsection (1)(b) of this section according to rules adopted by the department under ORS 419B.017.

(3)(a) When a report alleging that a child or ward in substitute care may have been subjected to abuse is received by the department, the department shall notify the attorney for the child or ward, the child's or ward's court appointed special advocate, the parents of the child or ward and any attorney representing a parent of the child or ward that a report has been received.

(b) The name and address of and other identifying information about the person who made the report may not be disclosed under this subsection. Any person or entity to whom notification is made under this subsection may not release any information not authorized by this subsection.

(c) The department shall make the notification required by this subsection within three business days of receiving the report of abuse.

(d) Notwithstanding the obligation imposed by this subsection, the department is not required under this subsection to notify the parent or parent's attorney that a report of abuse has been received if the notification may interfere with an investigation or assessment or jeopardize the child's or ward's safety. [1993 c.546 §15; 1993 c.734 §1a; 2005 c.250 §1; 2007 c.237 §1]

**419B.016 Offense of false report of child abuse.** (1) A person commits the offense of making a false report of child abuse if, with the intent to influence a custody, parenting time, visitation or child support decision, the person:

- (a) Makes a false report of child abuse to the Department of Human Services or a law enforcement agency, knowing that the report is false; or
- (b) With the intent that a public or private official make a report of child abuse to the Department of Human Services or a law enforcement agency, makes a false report of child abuse to the public or private official, knowing that the report is false.

(2) Making a false report of child abuse is a Class A violation. [2011 c.606 §2]

Note: 419B.016 was added to and made a part of 419B.005 to 419B.050 by legislative action but was not added to any smaller series therein. See Preface to Oregon Revised Statutes for further explanation.

**419B.017 Time limits for notification between law enforcement agencies and Department of Human Services; rules.** (1) The Department of Human Services shall adopt rules establishing:

- (a) The time within which the notification required by ORS 419B.015 (1)(a) must be made. At a minimum, the rules shall:
  - (A) Establish which reports of child abuse require notification within 24 hours after receipt;
  - (B) Provide that all other reports of child abuse require notification within 10 days after receipt; and
  - (C) Establish criteria that enable the department, the designee of the department or a law enforcement agency to quickly and easily identify reports that require notification within 24 hours after receipt.

(b) How the notification is to be made.

(2) The department shall appoint an advisory committee to advise the department in adopting rules required by this section. The department shall include as members of the advisory committee representatives of law enforcement agencies and multidisciplinary teams formed pursuant to ORS 418.747 and other interested parties.

(3) In adopting rules required by this section, the department shall balance the need for providing other entities with the information contained in a report received under ORS 419B.015 with the resources required to make the notification.

(4) The department may recommend practices and procedures to local law enforcement agencies to meet the requirements of rules adopted under this section. [2005 c.250 §3]

Note: 419B.017 was added to and made a part of 419B.005 to 419B.050 by legislative action but was not added to any smaller series therein. See Preface to Oregon Revised Statutes for further explanation.



**419B.020 Duty of department or law enforcement agency receiving report; investigation; notice to parents; physical examination; child's consent; notice at conclusion of investigation.** (1) If the Department of Human Services or a law enforcement agency receives a report of child abuse, the department or the agency shall immediately:

- (a) Cause an investigation to be made to determine the nature and cause of the abuse of the child; and
  - (b) Notify the Office of Child Care if the alleged child abuse occurred in a child care facility as defined in ORS 329A.250.
- (2) If the abuse reported in subsection (1) of this section is alleged to have occurred at a child care facility:
- (a) The department and the law enforcement agency shall jointly determine the roles and responsibilities of the department and the agency in their respective investigations; and
  - (b) The department and the agency shall each report the outcomes of their investigations to the Office of Child Care.
- (3) If the law enforcement agency conducting the investigation finds reasonable cause to believe that abuse has occurred, the law enforcement agency shall notify by oral report followed by written report the local office of the department. The department shall provide protective social services of its own or of other available social agencies if necessary to prevent further abuses to the child or to safeguard the child's welfare.
- (4) If a child is taken into protective custody by the department, the department shall promptly make reasonable efforts to ascertain the name and address of the child's parents or guardian.
- (5)(a) If a child is taken into protective custody by the department or a law enforcement official, the department or law enforcement official shall, if possible, make reasonable efforts to advise the parents or guardian immediately, regardless of the time of day, that the child has been taken into custody, the reasons the child has been taken into custody and general information about the child's placement, and the telephone number of the local office of the department and any after-hours telephone numbers.
- (b) Notice may be given by any means reasonably certain of notifying the parents or guardian, including but not limited to written, telephonic or in-person oral notification. If the initial notification is not in writing, the information required by paragraph (a) of this subsection also shall be provided to the parents or guardian in writing as soon as possible.
  - (c) The department also shall make a reasonable effort to notify the noncustodial parent of the information required by paragraph (a) of this subsection in a timely manner.
  - (d) If a child is taken into custody while under the care and supervision of a person or organization other than the parent, the department, if possible, shall immediately notify the person or organization that the child has been taken into protective custody.

- (6) If a law enforcement officer or the department, when taking a child into protective custody, has reasonable cause to believe that the child has been affected by sexual abuse and rape of a child as defined in ORS 419B.005 (1)(a)(C) and that physical evidence of the abuse exists and is likely to disappear, the court may authorize a physical examination for the purposes of preserving evidence if the court finds that it is in the best interest of the child to have such an examination. Nothing in this section affects the authority of the department to consent to physical examinations of the child at other times.
- (7) A minor child of 12 years of age or older may refuse to consent to the examination described in subsection (6) of this section. The examination shall be conducted by or under the supervision of a physician licensed under ORS chapter 677 or a nurse practitioner licensed under ORS chapter 678 and, whenever practicable, trained in conducting such examinations.
- (8) When the department completes an investigation under this section, if the person who made the report of child abuse provided contact information to the department, the department shall notify the person about whether contact with the child was made, whether the department determined that child abuse occurred and whether services will be provided. The department is not required to disclose information under this subsection if the department determines that disclosure is not permitted under ORS 419B.035. [1993 c.546 §16; 1993 c.622 §7a; 1997 c.130 §13; 1997 c.703 §1; 1997 c.873 §33; 2007 c.501 §4; 2007 c.781 §1; 2013 c.624 §83]

**419B.025 Immunity of person making report in good faith.** Anyone participating in good faith in the making of a report of child abuse and who has reasonable grounds for the making thereof shall have immunity from any liability, civil or criminal, that might otherwise be incurred or imposed with respect to the making or content of such report. Any such participant shall have the same immunity with respect to participating in any judicial proceeding resulting from such report. [1993 c.546 §17]

# Child abuse reporting phone numbers

**If you think someone is being hurt or is in danger, call 911 immediately.**

**Report child abuse** to a local office of the Department of Human Services (DHS) or a local police department, county sheriff, county juvenile department, or Oregon State Police.

You can also call **1-855-503-SAFE (7233)**. This toll-free number allows you to report abuse or neglect of any child or adult to the Oregon Department of Human Services.

| County           | Daytime phone numbers  | Office hours   | After hours phone numbers   |
|------------------|--|--|---|
| <b>Baker</b>     | 541-523-6423 local<br>800-646-5430 toll free<br>(Main office numbers)                | Monday<br>through Friday<br>8 am to 12 pm<br>and 1 to 5 pm | 911 or local law enforcement agency:<br>Baker County Sheriff, 541-523-6415<br>Baker City Police, 541-523-3644                                       |
| <b>Benton</b>    | 541-757-5019 local<br>866-303-4643 toll free<br>(Dedicated child abuse<br>hotlines). | Monday<br>through Friday,<br>8 am to 5 pm                  | 911 or local law enforcement agency:<br>Benton County Sheriff, 541-766-<br>6858; Corvallis Police , 541-766-6925;<br>Philomath Police, 541-929-6911 |
| <b>Clackamas</b> | 971-673-7112 local<br>(Dedicated child abuse<br>hotline)                             | Monday<br>through Friday<br>8 am to 5 pm                   | 971-673-7112 local<br>(Dedicated child abuse hotline). Calls<br>are forwarded to Multnomah County<br>hotline  |
| <b>Clatsop</b>   | 877-302-0077 toll free<br>(Dedicated child abuse<br>hotline)                         | Monday<br>through Friday<br>8 am to 5 pm                   | 911   |
| <b>Columbia</b>  | 877-302-0077 toll free<br>(Dedicated child abuse<br>hotline)                         | Monday<br>through Friday<br>8 am to 5 pm                   | 911   |
| <b>Coos</b>      | 541-756-5500 local<br>800-500-2730 toll free;<br>(Main office numbers)               | Monday<br>through Friday,<br>8 am to 5 pm                  | 541-756-5500 local<br>800-500-2730 toll free<br>(Main office numbers)<br>Calls are forwarded to Belloni Ranch                                       |
| <b>Crook</b>     | 541-548-9499 local<br>(Dedicated child abuse<br>hotline)                             | Monday<br>through Friday<br>8 am to 5 pm                   | 911   |
| <b>Curry</b>     | 541-756-5500 local 800-<br>500-2730 toll free (Main<br>office numbers)               | Monday<br>through Friday,<br>8 am to 5 pm                  | 541-756-5500 local<br>800-500-2730 toll free (Main office<br>numbers)   |
| <b>Deschutes</b> | 541-548-9499 local<br>(Dedicated child abuse<br>hotline)                             | Monday<br>through Friday,<br>8 am to 5 pm                  | 911   |

| <b>County</b>     | <b>Daytime phone numbers</b>   | <b>Office hours</b>                       | <b>After hours phone numbers</b>  |
|-------------------|--|---|---|
| <b>Douglas</b>    | 541-440-3373 local<br>800-305-2903 toll free<br>(Main office numbers)              | Monday<br>through Friday<br>8 am to 5 pm  | 911 or local law enforcement agency:<br>Douglas County Sheriff<br>541-440-4450<br>Myrtle Creek Police 541-863-5221<br>Oakland Police 541-459-2661<br>Reedsport Police 541-271-2100<br>Roseburg Police 541-673-6633<br>Sutherlin Police 541-459-2211<br>Winston Police 541-679-8704  |
| <b>Gilliam</b>    | 855-541-0042 (Dedicated<br>child abuse hotline)                                    | Monday<br>through Friday<br>8 am to 5 pm  | 911 or Tri-County Dispatch at<br>541-384-2080   |
| <b>Grant</b>      | 877-877-5081 toll free<br>(Dedicated child abuse<br>hotline)                       | Monday<br>through Friday<br>8 am to 5 pm  | 911   |
| <b>Harney</b>     | 877-877-5081 toll free<br>(Dedicated child abuse<br>hotline)                       | Monday<br>through Friday<br>8 am to 5 pm  | 911   |
| <b>Hood River</b> | 855-541-0042 (Dedicated<br>child abuse hotline)                                    | Monday<br>through Friday,<br>8 am to 5 pm | 911 or<br>Hood River Sheriff 541-386-2711   |
| <b>Jackson</b>    | 541-858-3197 local<br>866-840-2741 toll free<br>(Dedicated child abuse<br>hotline) | Monday<br>through Friday<br>8 am to 5 pm  | 911 or local law enforcement agency:<br>Jackson County Sheriff 541-774-6800<br>Ashland Police 541-488-2211<br>Butte Falls Police 541-865-3200<br>Central Point Police 541-664-5578<br>Eagle Point Police 541-826-9171<br>Gold Hill Police 541-855-1484<br>Jacksonville Police 541-899-7100<br>Medford Police 541-774-2200<br>Phoenix Police 541-535-1113<br>Rogue River Police 541-582-4931<br>Shady Cove Police 541-878-3200<br>Talent Police 541-535-1253 |
| <b>Jefferson</b>  | 541-548-9499 local<br>(Dedicated child abuse<br>hotline)                           | Monday<br>through Friday<br>8 am to 5 pm  | 911   |
| <b>Josephine</b>  | 866-840-2741 toll free<br>(Dedicated child abuse<br>hotline)                       | Monday<br>through Friday<br>8 am to 5 pm  | 911 or local law enforcement agency:<br>Josephine Sheriff 541-474-5129<br>Grants Pass 541-474-6370  |
| <b>Klamath</b>    | 541-883-5570 local<br>(Main office number)   | Monday<br>through Friday<br>8 am to 5 pm  | 911   |

| <b>County</b>    | <b>Daytime phone numbers</b>  | <b>Office hours</b>                      | <b>After hours phone numbers</b>   |
|------------------|---|--|--|
| <b>Lake</b>      | 541-947-2273 local<br>888-811-4201 toll free<br>(Main office numbers)               | Monday<br>through Friday<br>8 am to 5 pm | 911  |
| <b>Lane</b>      | 541-686-7555 local<br>866-300-2782 toll free<br>(Main office numbers)               | Monday<br>through Friday<br>8 am to 5 pm | 911  |
| <b>Lincoln</b>   | 866-303-4643 toll free<br>(Dedicated child abuse<br>hotlines)                       | Monday<br>through Friday<br>8 am to 5 pm | 911 or local law enforcement agency:<br>Lincoln County Sheriff 541-563-3600<br>Lincoln City Police 541-994-3636<br>Newport Police 541-574-3348<br>Toledo Police 541-336-5555 |
| <b>Linn</b>      | 866-303-4643 toll free<br>(Dedicated child abuse<br>hotlines)                       | Monday<br>through Friday<br>8 am to 5 pm | 911 or local law enforcement agency:<br>Linn County Sheriff 541- 967-3950<br>Albany Police 541-917-7680<br>Lebanon Police 541-451-1751<br>Sweet Home Police 541-367-5181     |
| <b>Malheur</b>   | 877-877-5081 toll free<br>(Dedicated child abuse<br>hotline)                        | Monday<br>through Friday<br>8 am to 5 pm | 911  |
| <b>Marion</b>    | 503-378-6704 local<br>(Dedicated child abuse<br>hotline)                            | Monday<br>through Friday<br>8 am to 5 pm | 911  |
| <b>Morrow</b>    | 541-481-9482 local<br>800-547-3897 toll free<br>(Main office numbers)               | Monday<br>through Friday<br>8 am to 5 pm | 911  |
| <b>Multnomah</b> | 503-731-3100 local<br>800-509-5439 toll free<br>(Dedicated child abuse<br>hotlines) | 7 days a week<br>24 hours daily          | 503-731-3100 local<br>800-509-5439 toll free<br>(Dedicated child abuse hotlines)<br>Calls forwarded to Children's Receiving<br>Center Friday & Saturday nights               |
| <b>Polk</b>      | 503-378-6704 local<br>(Dedicated child abuse<br>hotline)                            | Monday<br>through Friday<br>8 am to 5 pm | 911  |
| <b>Sherman</b>   | 855-541-0042 (Dedicated<br>child abuse hotline)                                     | Monday<br>through Friday<br>8 am to 5 pm | 911 or<br>Tri-County Dispatch 541-384-2080   |
| <b>Tillamook</b> | 877-302-0077 toll free<br>(Dedicated child abuse<br>hotline)                        | Monday<br>through Friday<br>8 am to 5 pm | 911  |
| <b>Umatilla</b>  | 541-481-9482 local<br>800-547-3897 toll free<br>(Main office numbers)               | Monday<br>through Friday<br>8 am to 5 pm | 911 or<br>City/County Dispatch 541-966-3650<br>option 7  |

| <b>County</b>     | <b>Daytime phone numbers</b>  | <b>Office hours</b>                      | <b>After hours phone numbers</b>   |
|-------------------|---|--|--|
| <b>Union</b>      | 541-963-8571 local<br>888-278-4411 toll-free<br>(Main office number)  | Monday<br>through Friday<br>8 am to 5 pm | 911 or local law enforcement agency:<br>Union County Sheriff 541-963-1017<br><br>Elgin Police 541-437-9771   |
| <b>Wallowa</b>    | 541-426-4558 local<br>866-538-5804 toll free<br>(Main office numbers) | Monday<br>through Friday<br>8 am to 5 pm | 911 or<br>Wallowa County Sheriff 541-426-3131  |
| <b>Wasco</b>      | 855-541-0042 (Dedicated<br>child abuse hotline)                       | Monday<br>through Friday<br>8 am to 5 pm | 911 or<br>Wasco County Sheriff at 541-296-5454   |
| <b>Washington</b> | 503-681-6917 local<br>(Dedicated child abuse<br>hotline)              | Monday<br>through Friday<br>8 am to 5 pm | 503-681-6917 local<br>(Dedicated child abuse hotline) 800-<br>275-8952 dial 1, toll free<br>(Main office number)<br>Calls are forwarded to Multnomah<br>County hotline |
| <b>Wheeler</b>    | 855-541-0042 (Dedicated<br>child abuse hotline)                       | Monday<br>through Friday<br>8 am to 5 pm | 911 or<br>Tri-County Dispatch 541-384-2080   |
| <b>Yamhill</b>    | 503-378-6704 local<br>(Dedicated child abuse<br>hotline)              | Monday<br>through Friday<br>8 am to 5 pm | 911  |
|                   |   |  |  |





500 Summer Street NE  
Salem, Oregon 97301

DHS 9061 (Revised 2/2015)